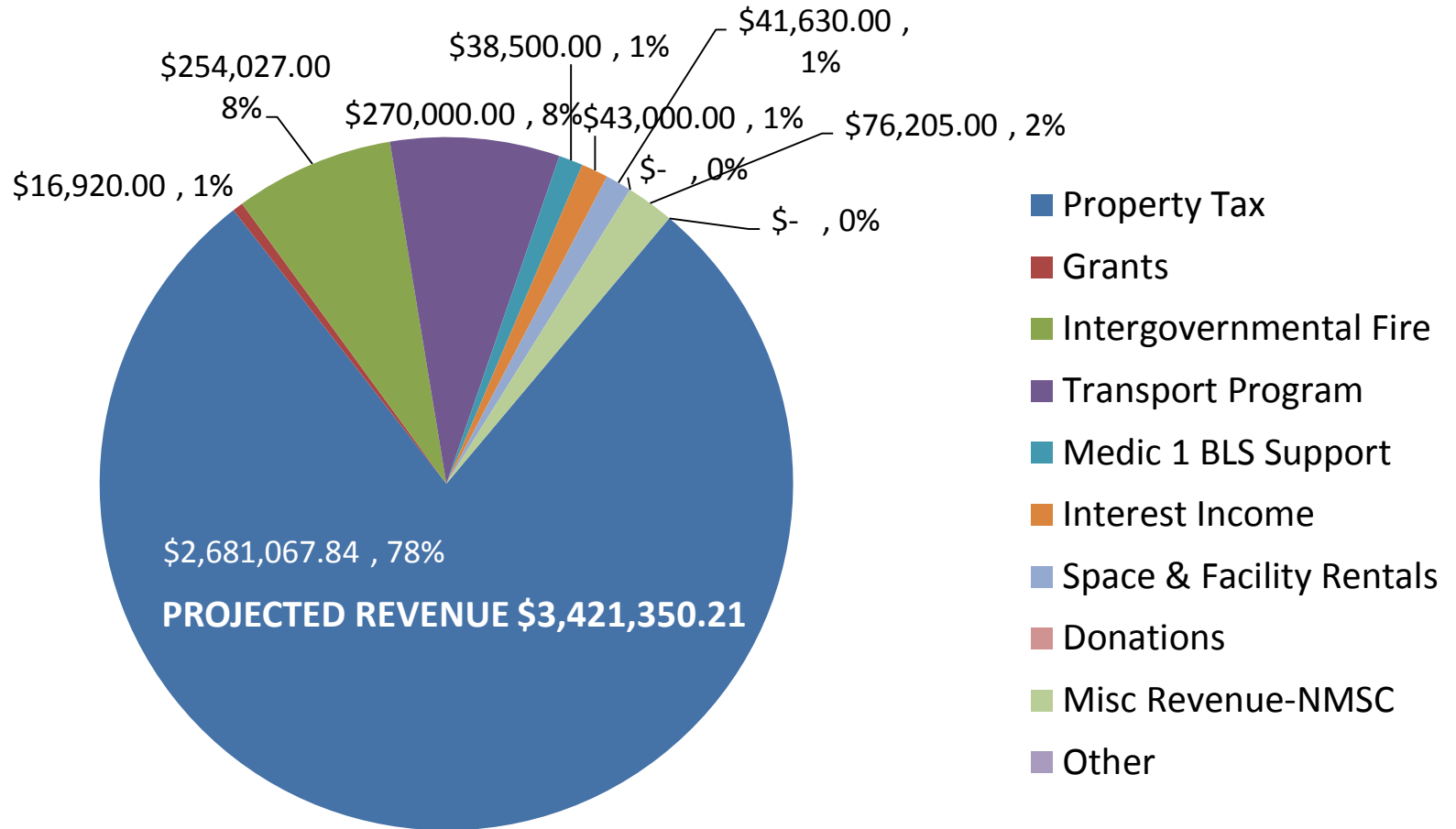




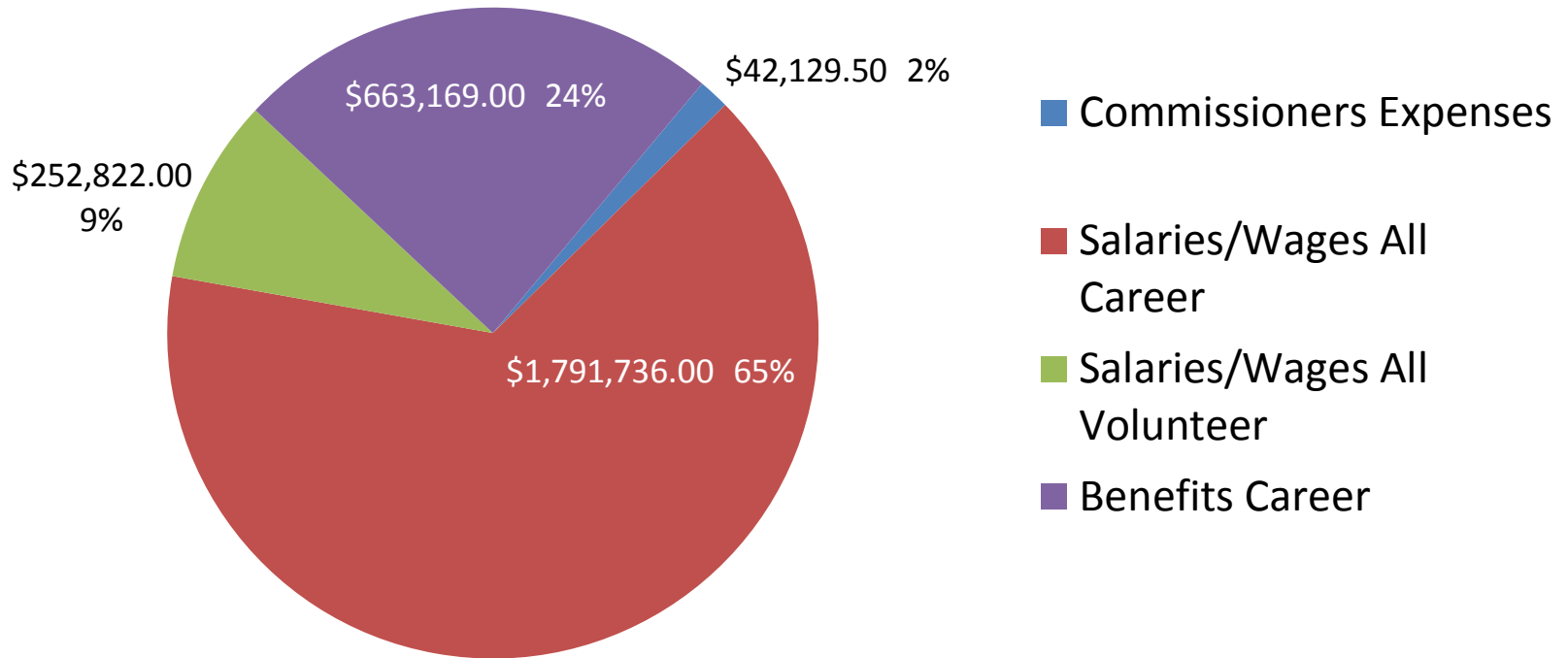
WEST THURSTON REGIONAL FIRE AUTHORITY 2011 REVENUE BY SOURCE





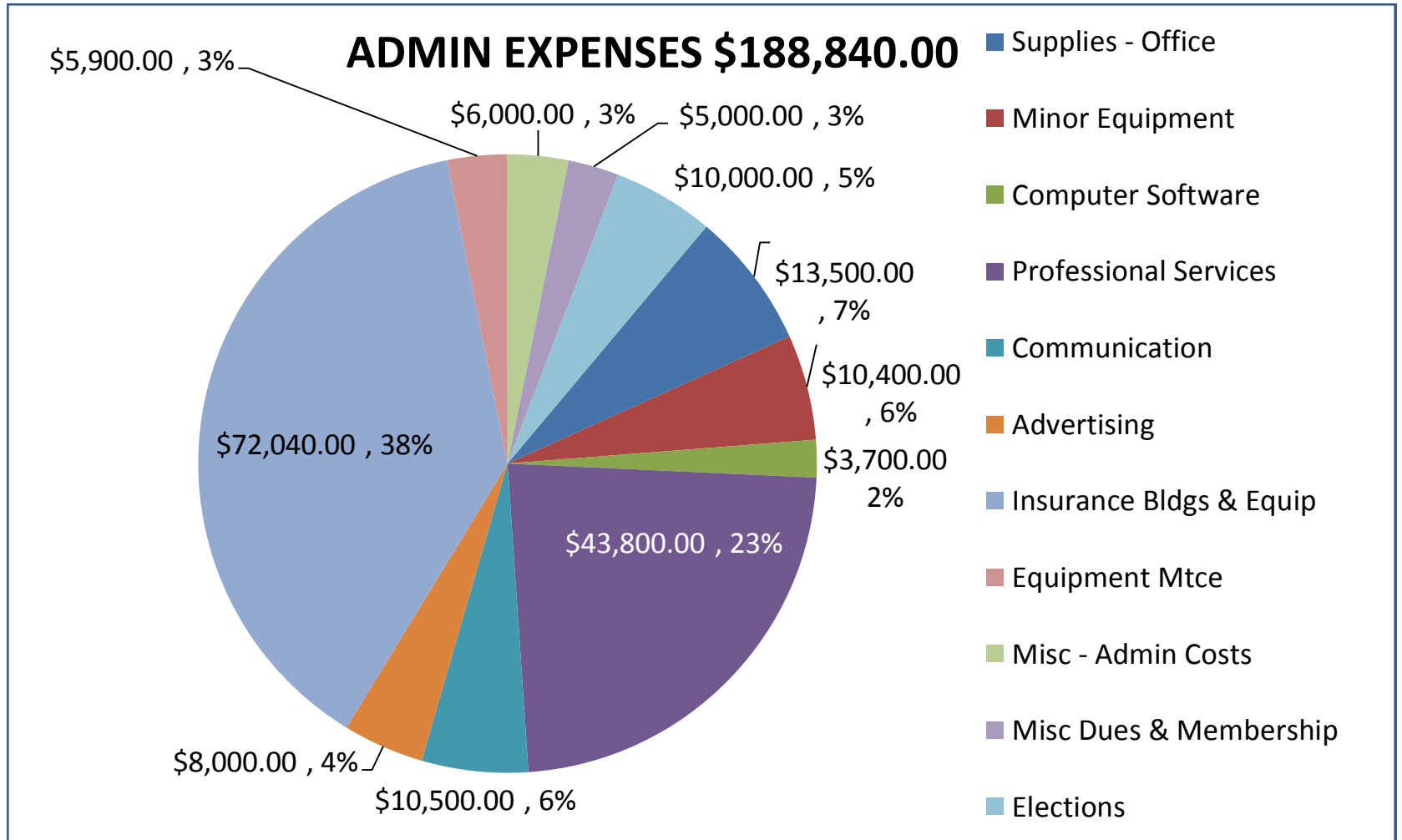
WEST THURSTON REGIONAL FIRE AUTHORITY
2011 PERSONNEL EXPENSES BY CATEGORY

ALL PERSONNEL WAGES/ BENEFITS \$2,749,856.50





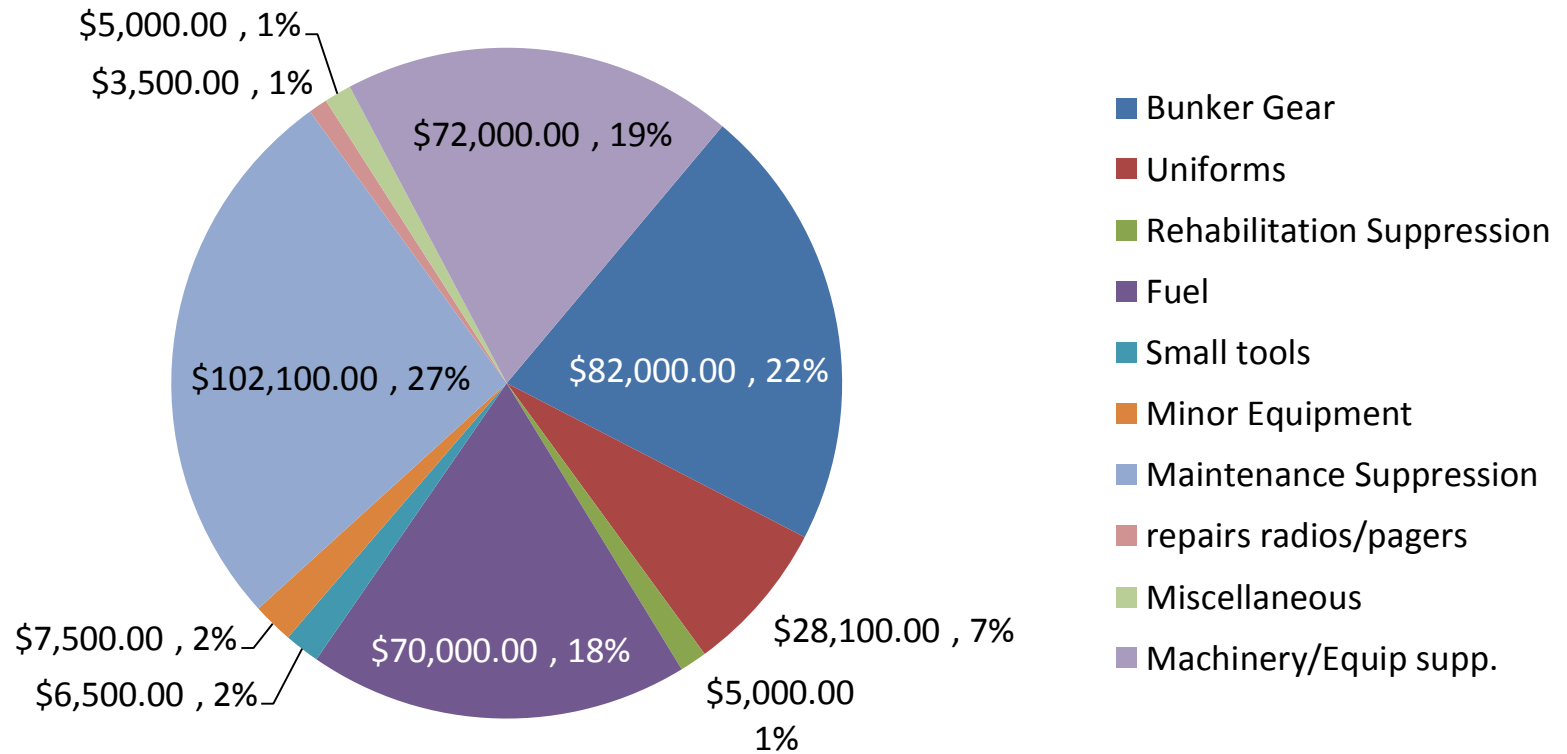
WEST THURSTON REGIONAL FIRE AUTHORITY
**2011 ADMIN-PROFESSIONAL SERVICES-RISK MANAGEMENT
EXPENSES BY CATEGORY**





WEST THURSTON REGIONAL FIRE AUTHORITY
2011 SUPPRESSION/OPS EXPENSES BY CATEGORY

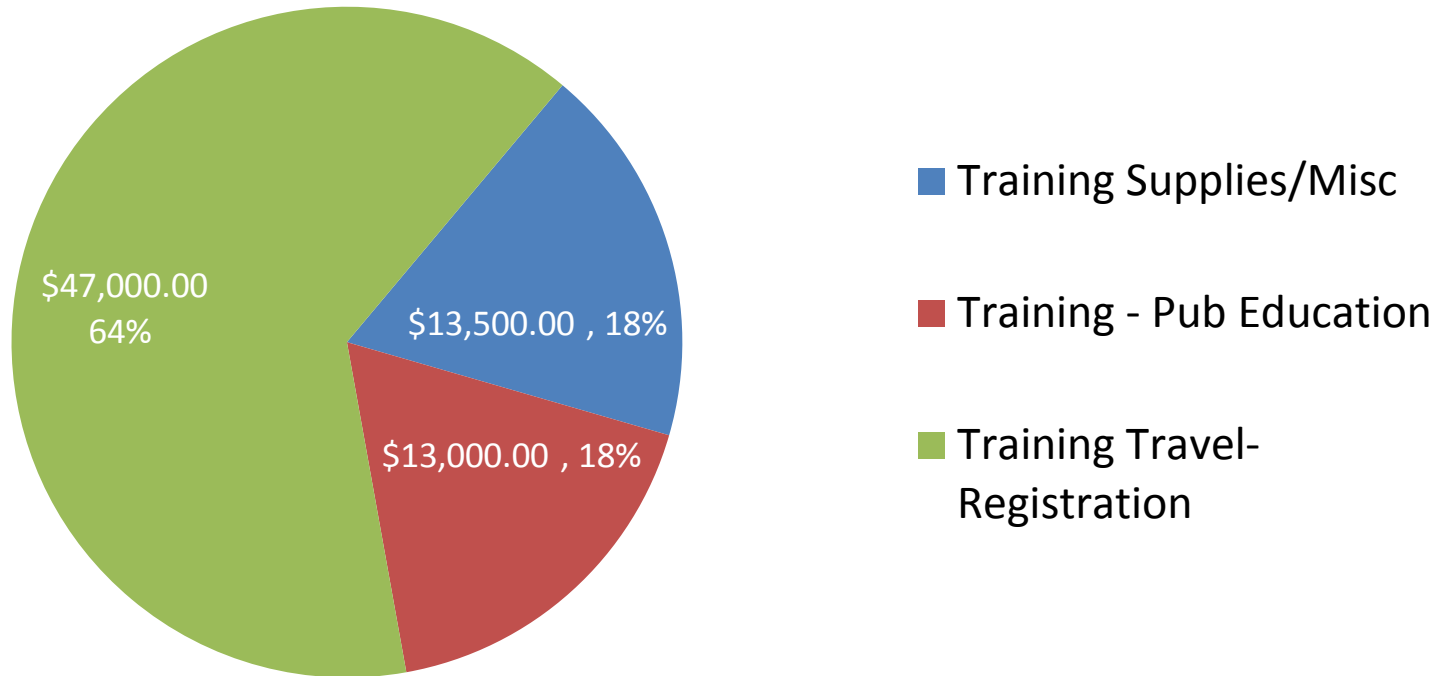
SUPPRESSION/OPERATION EXPENSES \$381,700.00





WEST THURSTON REGIONAL FIRE AUTHORITY
2011 TRAINING EXPENSES BY CATEGORY

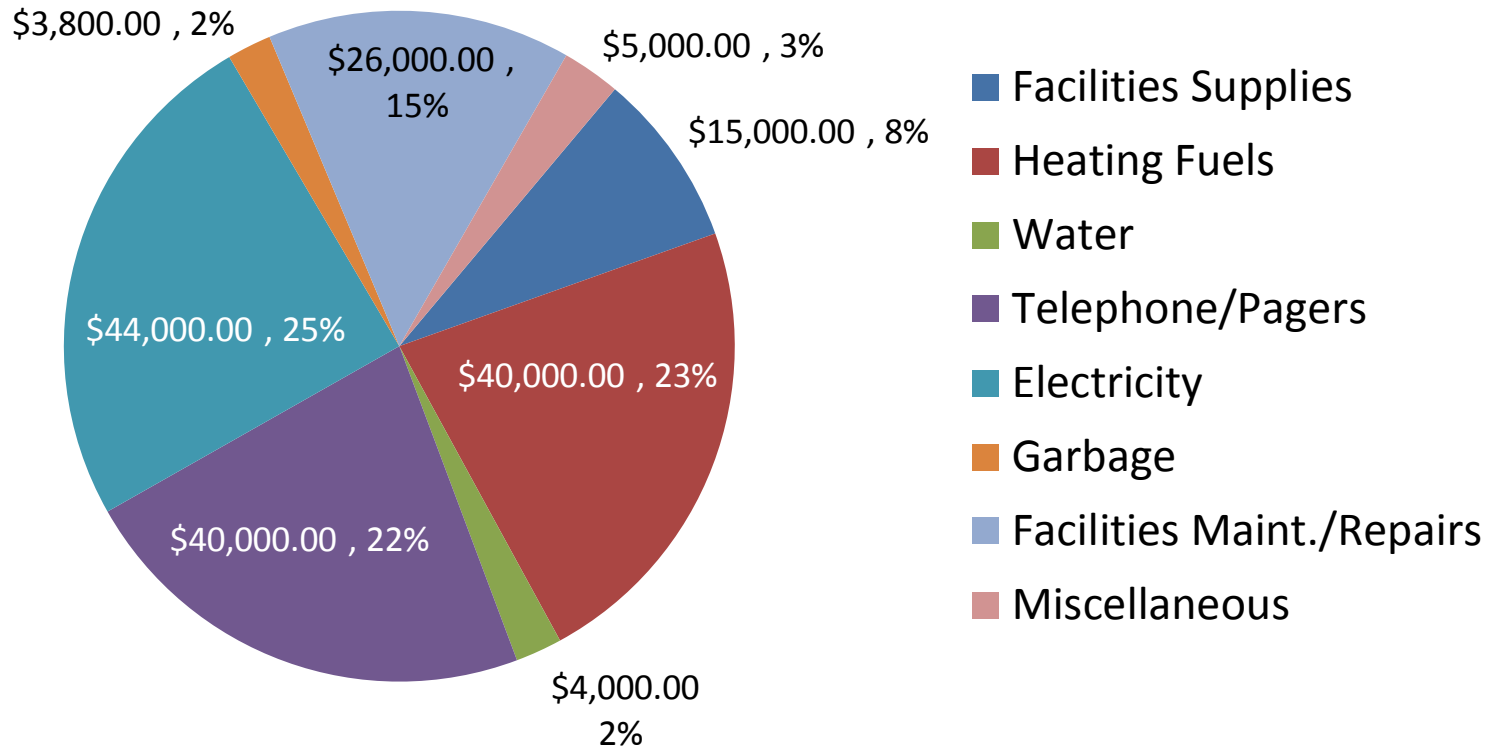
TRAINING PUBLIC EDUCATION EXPENSES \$73,500.00





WEST THURSTON REGIONAL FIRE AUTHORITY
2011 FACILITIES EXPENSES BY CATEGORY

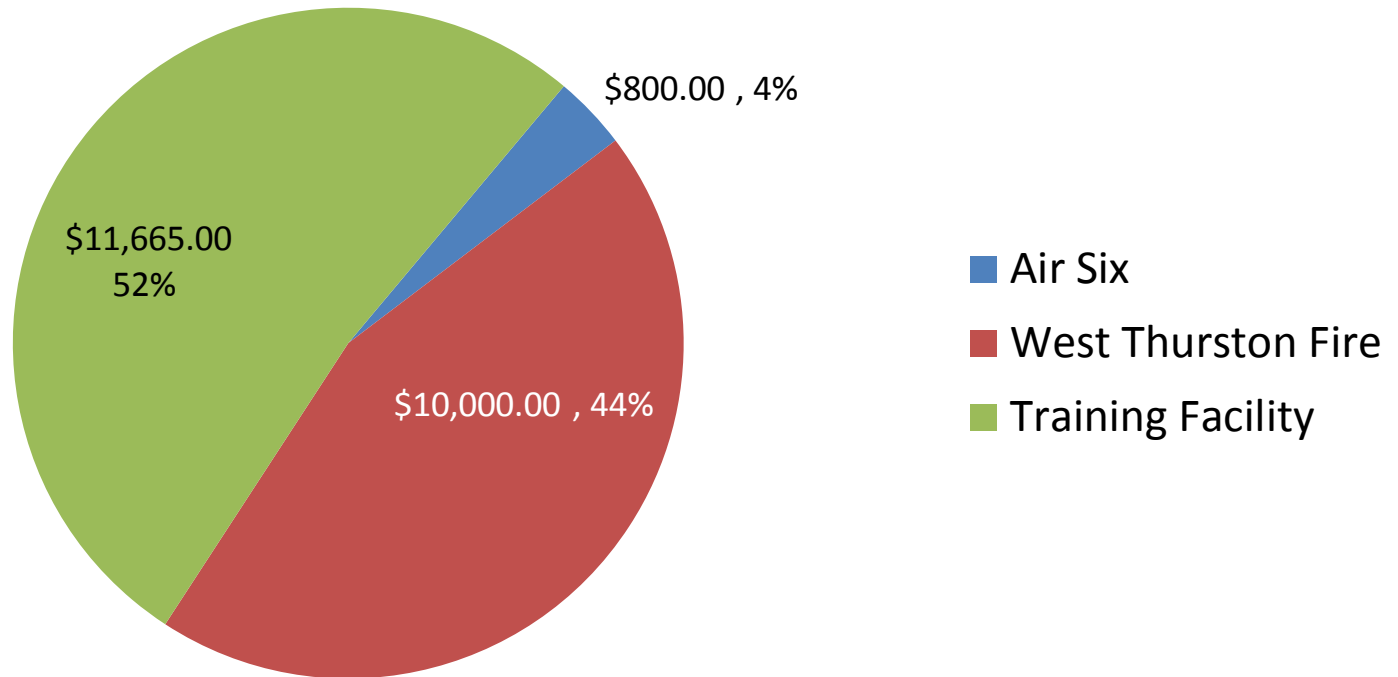
FACILITIES EXPENSES \$177,800.00





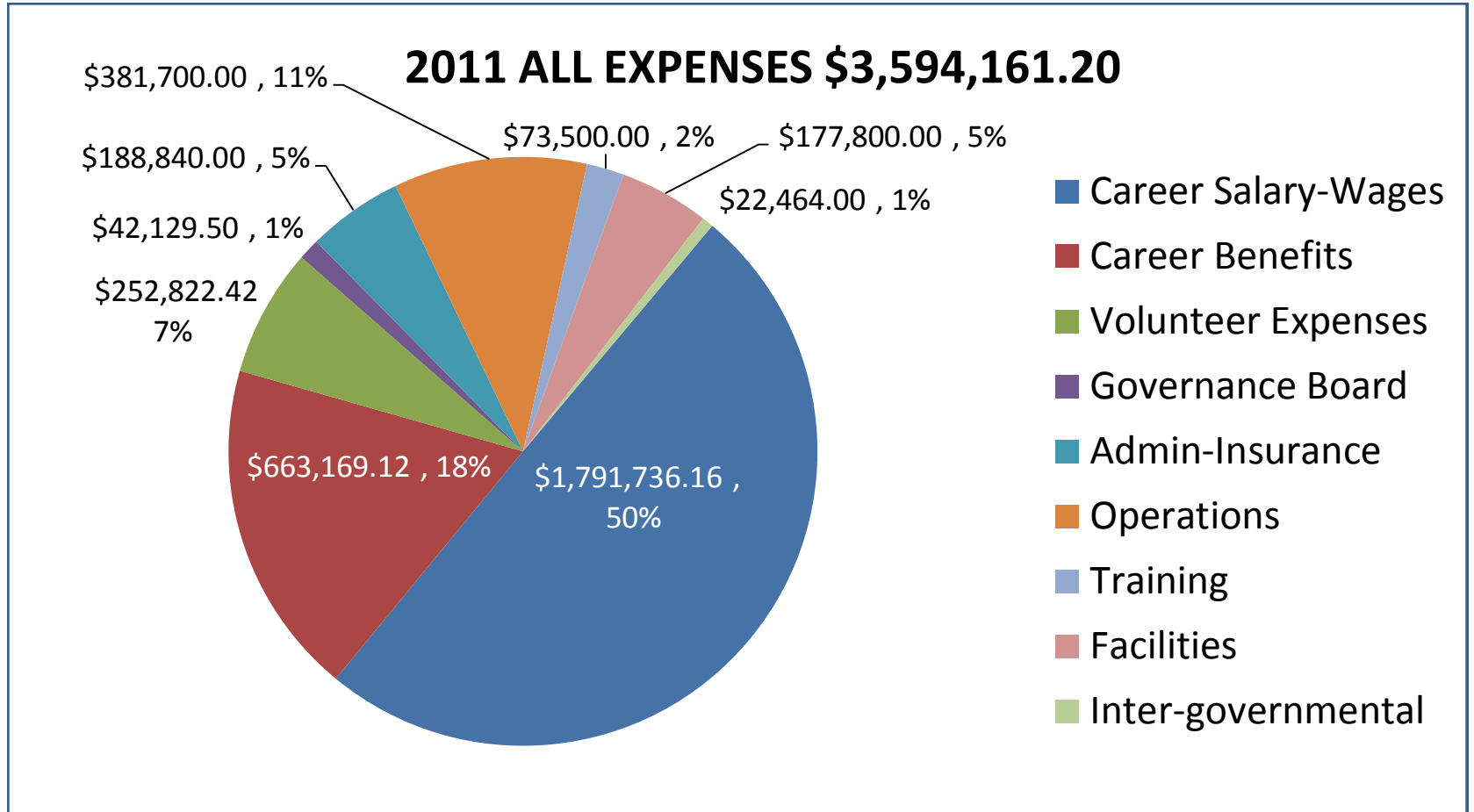
WEST THURSTON REGIONAL FIRE AUTHORITY
2011 INTER-GOVERNMENTAL EXPENSES BY CATEGORY

INTER-GOVENMENTAL EXPENSES \$22,465.00



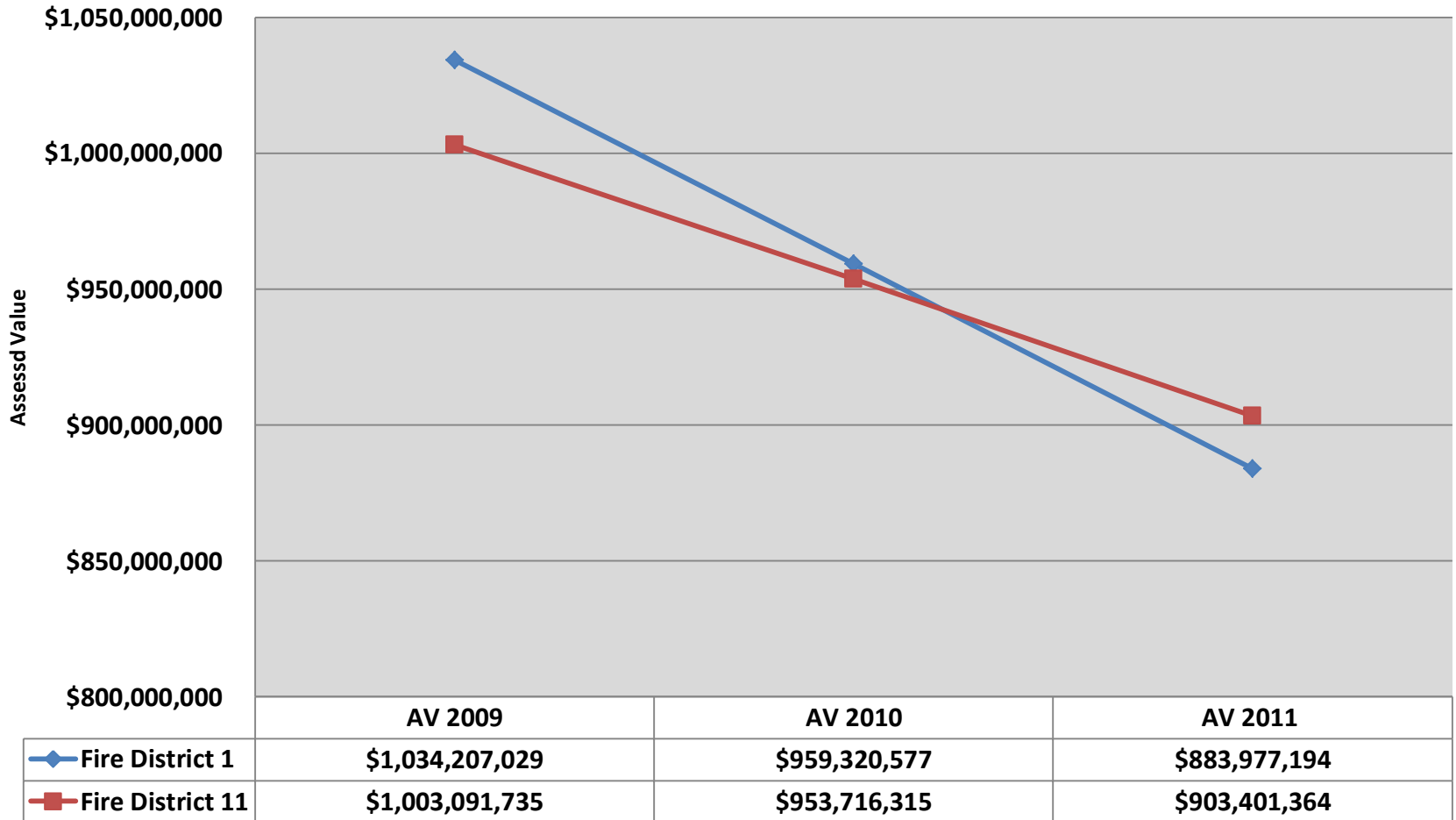


WEST THURSTON REGIONAL FIRE AUTHORITY
2011 ALL EXPENSES BY CATAGORY





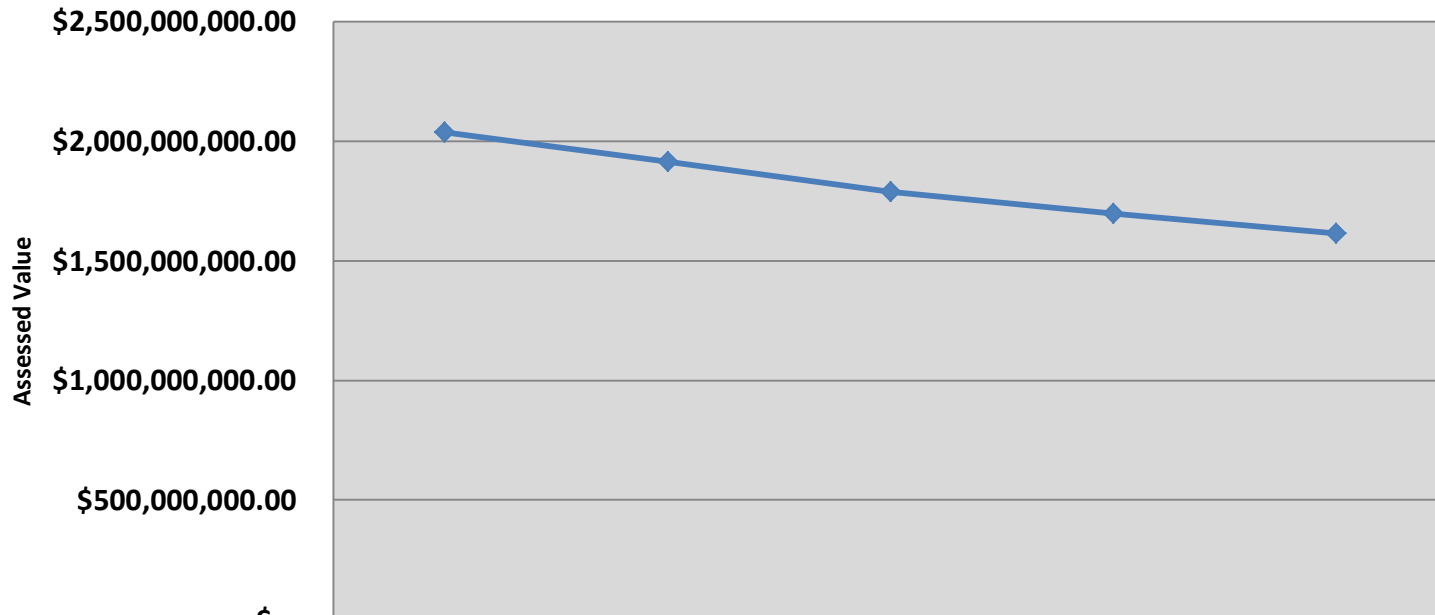
WEST THURSTON REGIONAL FIRE AUTHORITY FIRE DISTRICT ASSESSED VALUE DECLINE (2009-2011)





WEST THURSTON REGIONAL FIRE AUTHORITY
WTRFA ASSESSED VALUE DECLINE

West Thurston Combined AV
Actual 2009- 2010
Projected/Trend (5%/YR) 2011-2013



	2009	2010	2011	2012	2013
◆ West Thurston Combined	\$2,037,298,7	\$1,913,036,8	\$1,787,373,5	\$1,698,004,8	\$1,613,104,6



WEST THURSTON REGIONAL FIRE AUTHORITY
WTRFA TAX BASED REVENUE

2009-2010 Actual
2011-2013 (5%/YR) Projected/Trend

